

How to Get Started With CloudGen Access Vx

<https://campus.barracuda.com/doc/96025155/>


- **Step 1:** Download and import the installation file for your hypervisor – see [How to Deploy CloudGen Access on a Virtual Appliance](#).
- **Step 2:** Return to this article to configure the network, proxy, and SSH as described below.
- **Step 3:** Follow instructions in [How to Deploy the CloudGen Access User Directory Connector with Vx](#).

Also see [CloudGen Access on Vx Release Notes](#).

Network Configuration

Step 1. Log In

1. Power on the Vx and launch the console.
2. When you see the Login screen, use the default credentials to log in:
Username: *admin*
Password: *admin*



```
----- Barracuda Networks, Inc -----  
  
Welcome to CGA Virtual Appliance  
IP: 192.168.1.1  
Docs: https://campus.barracuda.com/doc/93201218  
-----  
  
cga-virtual-appliance login:
```

3. Follow the prompts to change your password and login.

Step 2. Set the IP Address and Time Zone.

By default, the IP address is obtained via DHCP. If DHCP is not available, you can manually assign an IP address to the virtual machine. To check or to manually assign an IP address to the virtual machine:

1. Select **Network** and check the current configuration.

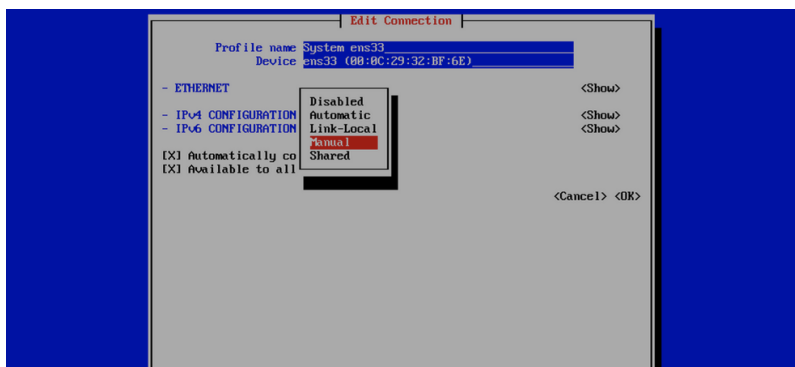
```

----- Barracuda Networks, Inc -----
Welcome to CGA Virtual Appliance
IP: 192.168.1.100

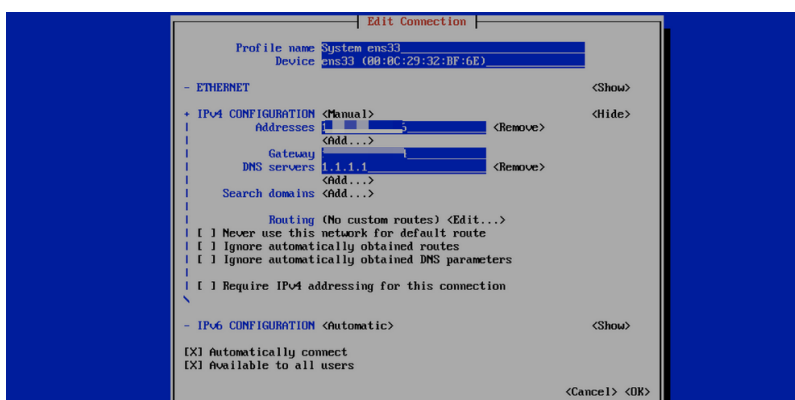
Docs: https://campus.barracuda.com/doc/93201218
-----

cga-virtual-appliance login: admin
Password:
Last login: Fri Dec 10 13:49:14 on tty1
>>> / Select option: Network
> - ens33
>   - 192.168.1.100/24
>   - fe80::20c:29ff:fe32:bf6e/64
> - lo
>   - 127.0.0.1/8
>   - ::1/128
>>> /network Select option: (Use arrow keys or type to search)
- Status
- Configure
Back
  
```

2. Select **Configure** and **Edit Connection**.
3. Move the cursor to **IPv4 Configuration** and select *Manual*.



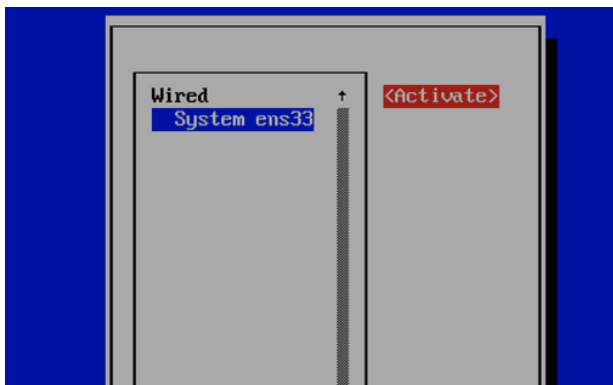
4. Enter your IPv4 configuration.



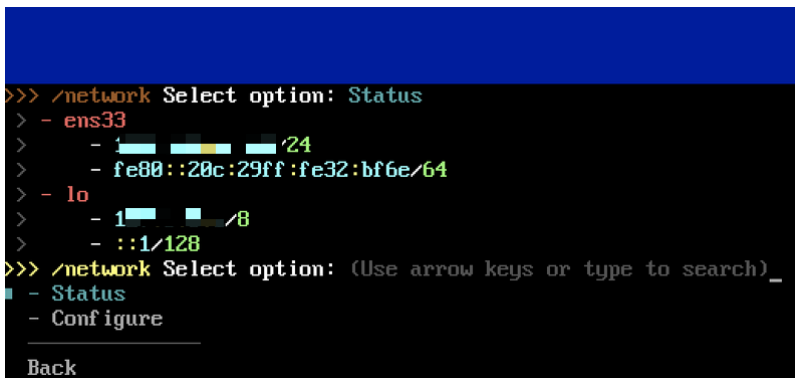
5. Select **<OK>** and then **Back**.
6. Select the **Activate a Connection** option to restart the connection.



7. You need to **Deactivate** and **Activate** the connection to apply the changes.



8. Return to the main screen and select **Status** to confirm the changes.



To change the time zone, select **System > Date > Timezone**.

How to Configure SSH

1. Select **Services**.
2. Select **SSH**.
3. Select **Enable** to enable or **Start** to start the SSH service on boot-up.

4. If your virtual machine shares the IP address of your device on the external network (your device provides NAT for network traffic from the virtual machine), you need to change network settings to *bridge* mode (the virtual machine appears as an additional computer on the same physical network connection as your device).
5. You can check the IP address of the virtual appliance by selecting **Network** and **Status**.
6. Now you can SSH into the virtual appliance; example: `ssh admin@10.x.x.x`

How to Configure a Proxy

Note that Envoy is pre-configured to listen locally on 443/tcp via the proxy environment variable `FYDE_ENVOY_LISTENER_PORT`. There is also a firewall rule for the public zone allowing external access to this port.

1. Select **Services > Proxy > Configure > Set**.
2. Select `enrollment_token`.
3. Paste the token and click Enter, making sure that you are pasting without style (you can obtain the `enrollment_token` from the CloudGen Console when you create a new User Directory).
4. If you can't paste the token, you can SSH into the virtual appliance and paste it there. See [How to configure SSH](#) below.
5. To double check the entered values, select **View**.
6. Go to **Services > Proxy**.
7. Select **Start** to start the proxy service now, or **Enable** to start the proxy service now *and* enable starting the service on boot-up.

Next, see [How to Deploy the CloudGen Access User Directory Connector with Vx](#).

Figures

1. CGAVxLoginScreenshot.png
2. SelectNetworkSetIPAddress.png
3. CGAVxIP4ConfigManual.png
4. CGAVxIPv4Configuration.png
5. CGAVxActivateAConnection.png
6. CGAVxDeactivate.png
7. CGAVxMainScreenStatus.png

© Barracuda Networks Inc., 2024 The information contained within this document is confidential and proprietary to Barracuda Networks Inc. No portion of this document may be copied, distributed, publicized or used for other than internal documentary purposes without the written consent of an official representative of Barracuda Networks Inc. All specifications are subject to change without notice. Barracuda Networks Inc. assumes no responsibility for any inaccuracies in this document. Barracuda Networks Inc. reserves the right to change, modify, transfer, or otherwise revise this publication without notice.